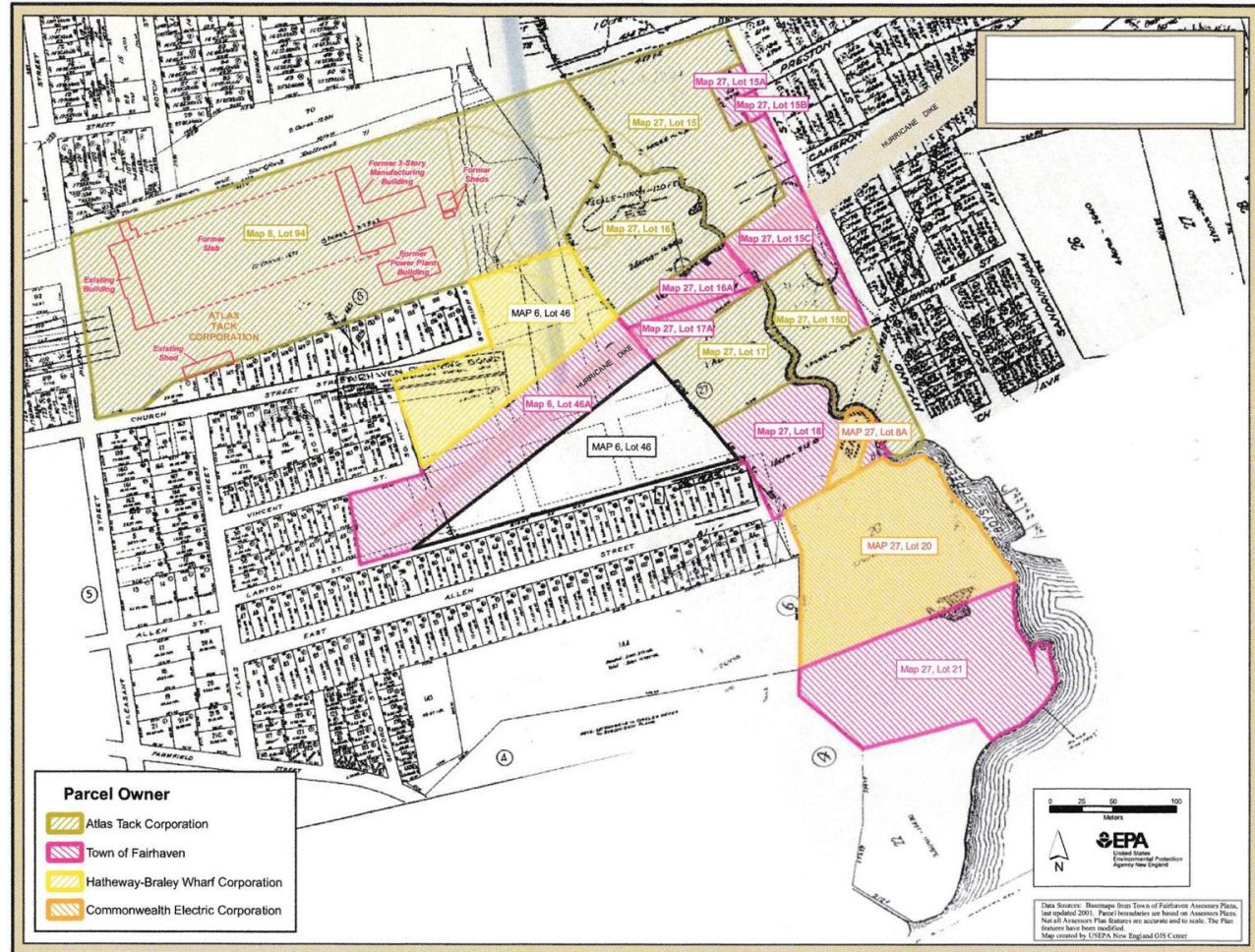


ATLAS TACK SUPERFUND SITE

**A Status Update Report from the Atlas Tack Working
Group
02/02/2026**

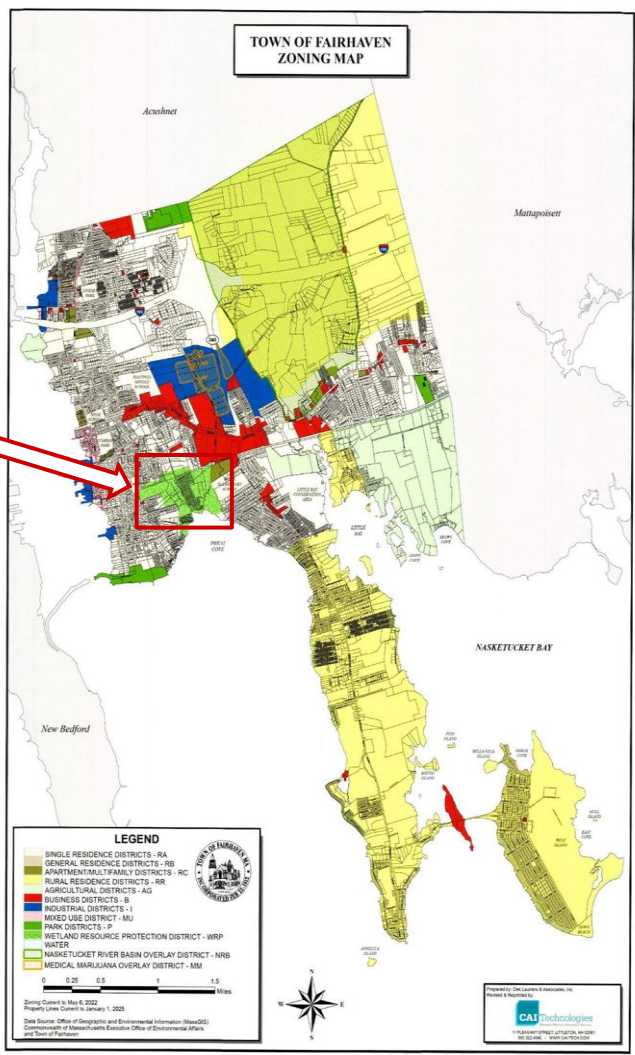
ATLAS TACK SUPERFUND SITE

- ❑ Defined by the EPA
- ❑ Covers more than 41 acres
- ❑ Comprises 16 parcels
- ❑ Encompasses Boys' Creek and a tidal basin/salt marsh to the east, and Atlas Tack and Hathaway-Braleley Wharf Co. properties to the west.



LOCATION AND CONTEXT – ZONING

Most parcels in the Superfund site are zoned “1-RA” However, they are wetlands and their use is limited by a WRP Overlay District, the EPA’s activity and use restrictions, and authority of Fairhaven’s Planning Board, Conservation Comm. and Zoning Board of Appeals.



LOCATION AND CONTEXT — OWNERS AND TAXES

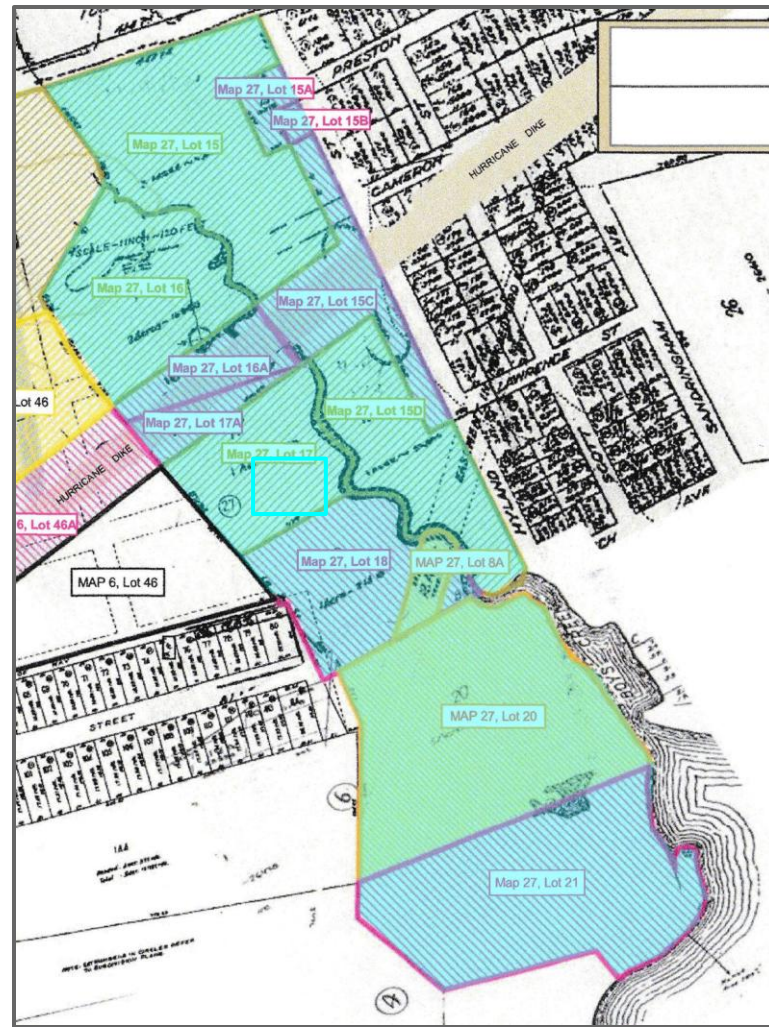
- ❑ This table presents financial details on parcels within the site.
- ❑ Atlas Tack owes almost \$1 million in back taxes.
- ❑ By judicial consent decree, less than \$100,000 of these back taxes will go to Fairhaven. The balance is earmarked for reimbursement of clean-up costs incurred by state and federal agencies.

As of October 2025

LOT	OWNER	ACREAGE	ASSESSED VALUE	ANNUAL TAX OBLIGATION	BACK TAXES
Assessors Map 8					
94	Atlas Tack	16.53	\$159,400	\$1,656	\$866,016
Assessors Map 6					
46	Hathaway-Bralely Wharf Co.	6.14	\$17,400	\$167	\$18,866
46A	Town	3.08	\$29,300	\$0	\$0
Assessors Map 27					
15	Atlas Tack	3.11	\$37,500	\$178	\$20,379
15A	Town	0.26	\$28,300	\$0	\$0
15B	Town	0.08	\$10,400	\$0	\$0
15C	Town	1.53	\$15,100	\$0	\$0
15D	Atlas Tack	1.75	\$3,500	\$17	\$7,045
16	Atlas Tack	2.39	\$4,800	\$23	\$7,738
16A	Town	0.54	\$75,400	\$0	\$0
17	Atlas Tack	1.59	\$3,200	\$15	\$8,014
17A	Town	0.41	\$29,300	\$0	\$0
18	Town	1.49	\$3,000	\$0	\$0
18A	Town	0.34	\$28,900	\$0	\$0
20	Town	5.28	\$10,600	\$0	\$0
21	Town	0.05	\$10,300	\$0	\$0

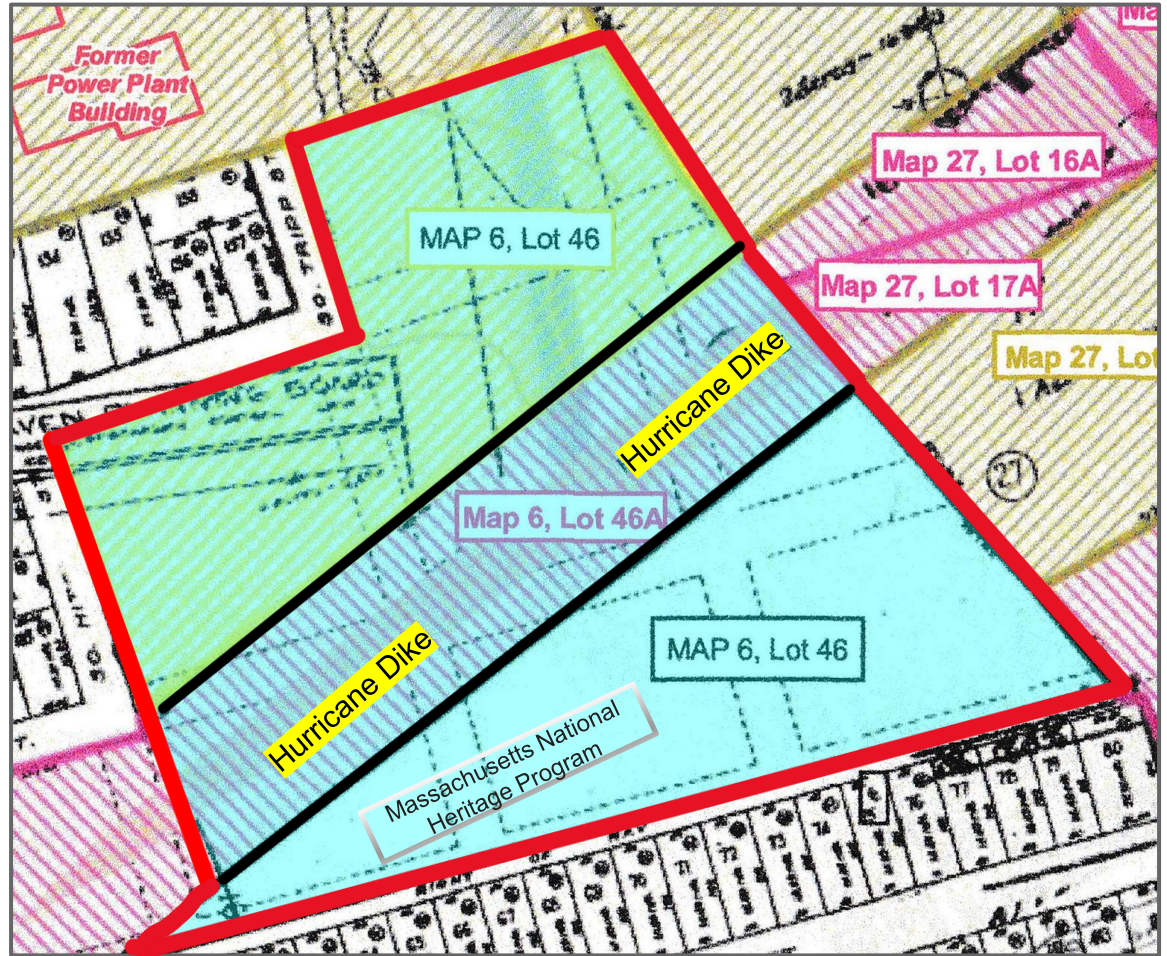
ATLAS TACK SUPERFUND SITE

- ❑ Parcels in the eastern half of the Superfund site have been remediated.
- ❑ All of this area covers Boy's Creek and an ecologically sensitive salt marsh.
- ❑ No further investigation needed for the current use of the property.
- ❑ Non-developable, but hopeful for potential passive use.



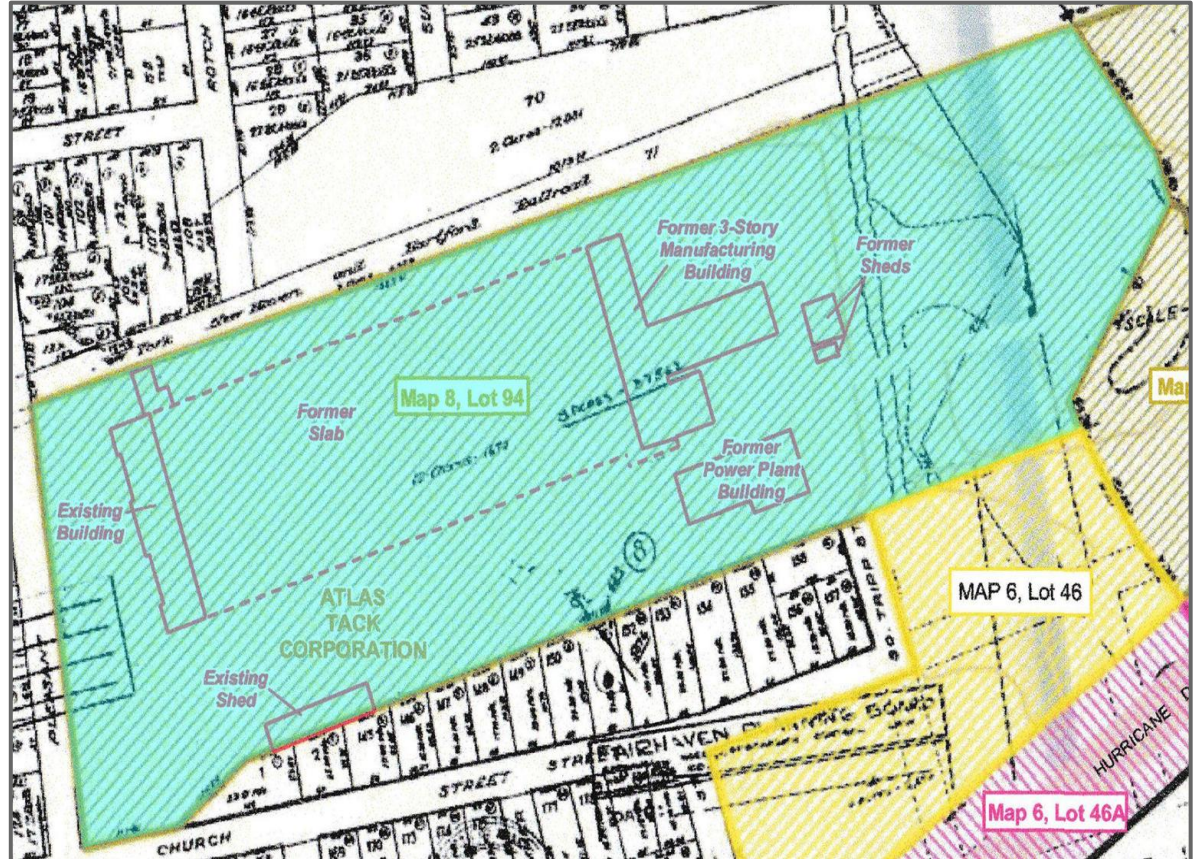
ATLAS TACK SUPERFUND SITE — LOT 46

- ❑ 6.14 acres owned by Hathaway-Braley Wharf Co. Inc.
- ❑ Bisected by the hurricane dike, which is owned by the town
- ❑ Land has been remediated and entire lot is currently under a conservation easement
- ❑ Has rare species and habitat mapped by the Massachusetts National Heritage Program and is undevelopable.



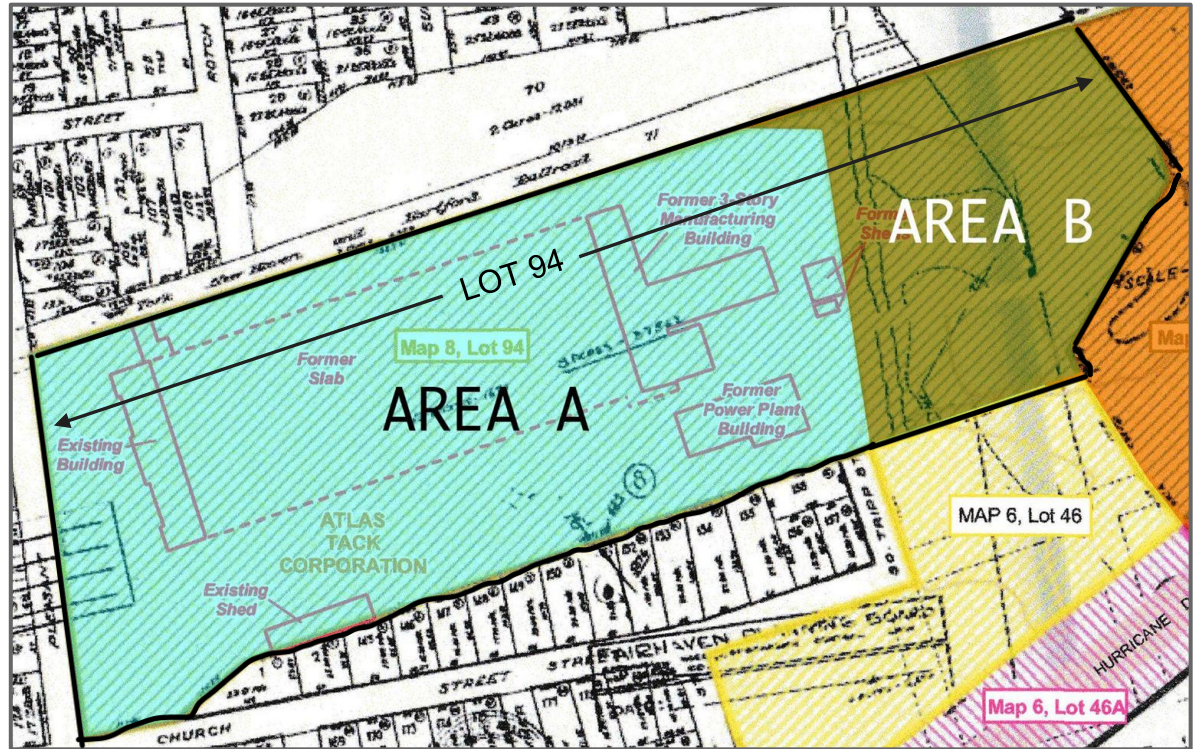
ATLAS TACK SUPERFUND SITE — LOT 94

- ❑ 16.53 acres owned by Atlas Tack is divided into Area A and Area B
- ❑ Zoned Industrial (with WRP Overlay and EPA land use restrictions)
- ❑ A vacant building and lot (brownfield) next to the bike path
- ❑ EPA remediated the site over several years at various locations.
- ❑ MassDEP continues to observe, and conduct groundwater monitoring.



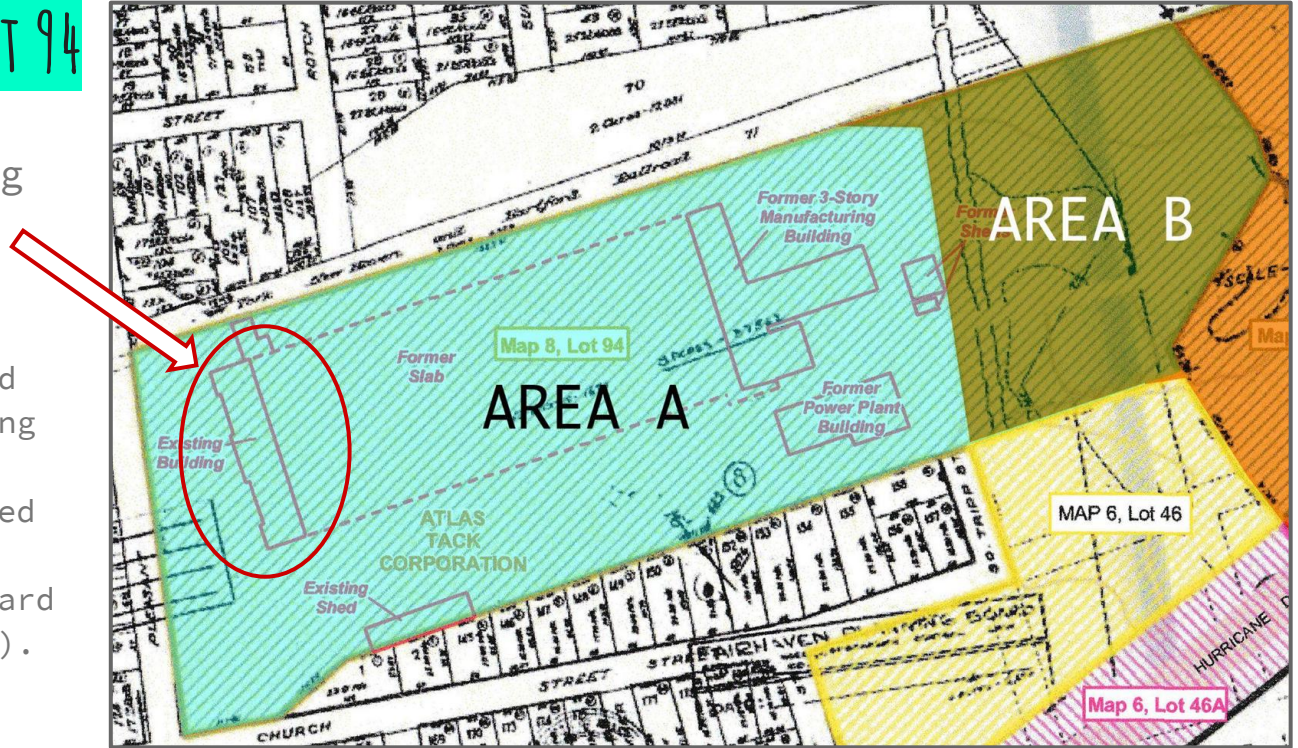
ATLAS TACK SUPERFUND SITE — LOT 94

- ❑ **Area A** is 10.33 acres and possibly available for redevelopment.
- ❑ **Area B** is 6.2 acres and is wetlands-non developable
- ❑ Areas A and B are restricted by Fairhaven's WRP Overlay District and MassDEP/EPA "Notice of Activity and Use Limitation."



ATLAS TACK SUPERFUND SITE — LOT 94

- ❑ Abandoned building is a **threat to public safety**
- ❑ Building was condemned by Fairhaven's building commissioner in June 2025. This is supported by a report from an Independent Survey Board in Jan. 2026 (per MGL).



SUMMARY

- ❑ Time is of the essence. The efforts of the Atlas Tack Working Group along with the Town Administrator, Building Commissioner, Select Board and Town Council have the unique ability to aggressively pursue Atlas Tack to finally remove the remnants of a potentially contaminated building with our town's demolition order. Additionally in the short term to aggressively pursue with legal council against Atlas Tack to provide adequate perimeter fencing for the safety of our residents.
- ❑ The Environmental Protection Agency (EPA) conducted a contamination assessment on December 10,2025 on the Atlas Tack building. A report is expected to be available in February 2026

SUMMARY

- ❑ The Atlas Tack Working Group team will continue to meet with EPA and the Mass Department of Environmental Protection (MassDEP) who are committed to a long-term solution and the ultimate removal of the EPA Superfund site designation.
- ❑ The Atlas Tack Working Group will continue gathering and assessing information relevant to the town's public safety, potential uses and creating, for the Town of Fairhaven, our final report.